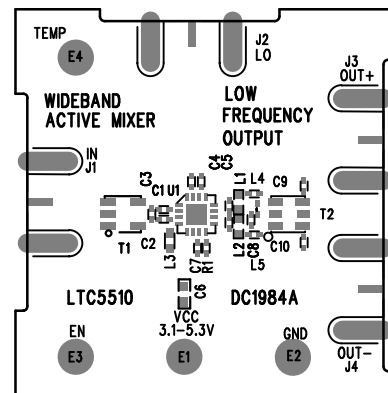


REVISION HISTORY				
ECO	REV	DESCRIPTION	APP. ENG.	DATE
-	2	PRODUCTION	SUNNY H.	04-04-13

NOTES: UNLESS OTHERWISE SPECIFIED

1. WORKMANSHIP SHALL BE IN ACCORDANCE WITH IPC-A-610.
2. ASSEMBLY PROCESS SHALL INCLUDE: REFLOW SOLDER TOP SIDE SMD. MAXIMUM SOLDER TEMPERATURE IS 240 DEGREES CELSIUS.
3. PARTS TO OMIT WILL BE SPECIFIED ON THE BILL OF MATERIALS. LOCATIONS OF OMITTED PARTS SHALL BE FREE OF SOLDER. MASK THE SOLDER STENCIL WHERE SMT PARTS ARE OMITTED.
4. NO SHUNTS
5. DEPANELIZE BOARDS AFTER ASSEMBLY AND ROUTE-OUT THE BREAKOUT TABS ON FOUR SIDES OF THE BOARD EDGE.
6. DO NOT APPLY ANY KIND OF ASSEMBLY STAMP OR QA STAMP
7. INSTALL J1-J3 CONNECTORS AS SHOWN BELOW:

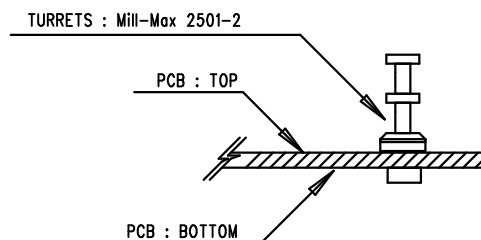
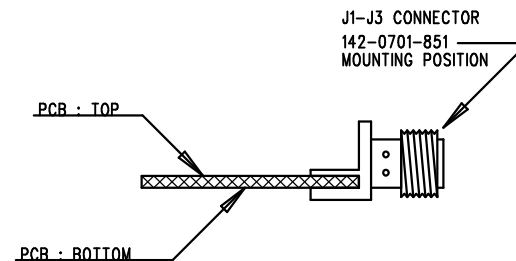


TOP SILKSCREEN

LINEAR TECHNOLOGY DATE: 04-04-2013

DC1984A-2 * LTC5510IUF

WIDEBAND ACTIVE MIXER LOW FREQUENCY OUTPUT



APPROVALS

PCB DES.	AK
APP ENG.	SUNNY H.

SCALE = NONE



1630 MCCARTHY BLVD
MILPITAS, CA 95035
PH: (408)432-1900
www.linear.com
LTC CONFIDENTIAL-
FOR CUSTOMER USE ONLY

TITLE: TOP ASSEMBLY DRAWING
WIDEBAND ACTIVE MIXER,
LOW FREQUENCY OUTPUT

SIZE N/A	IC NO. LTC5510IUF DEMO CIRCUIT 1984A	REV. 2
-------------	---	-----------

FILENAME: DC1984A-2.PCB

SHT 1 OF 1